



## SYNCHRO™ 4D

The industry leader in visual planning and 4D modeling

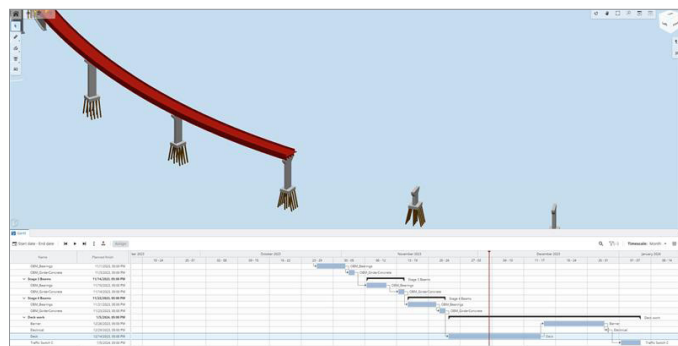
SYNCHRO 4D, an industry-leading 4D modeling solution, enables teams to turn design models into construction models with cutting-edge model-based QTO, scheduling, and construction simulations. It is designed and tailor-made for construction modeling, planning and scheduling, visualization, and simulation. All construction team members can build digital projects on the screen and extend the value of 3D models by adding time, the fourth dimension. Serving as the real-time source of truth, SYNCHRO 4D can help solve the time-cost conundrum, increase safety, and reduce project risks.

### EXTEND THE MODEL'S VALUE

SYNCHRO 4D provides a holistic and purpose-built construction solution, enabling projects to construct, plan, and track projects based on a construction model. Users can easily communicate and present the construction plan and schedule, allowing for trade partner collaboration and commitment with confidence, on-time execution and delivery, and quicker approval for payment. The web and mobile applications extend the value of the 4D construction model by exchanging and managing 2D, 3D, and 4D models with geolocated, rich data in the project context. Teams can efficiently access and author data to make more informed decisions.

### PLAN, CONSTRUCT, AND TRACK FROM MODELS

Slice and dice your design into work areas and construction models with auto-calculated quantities while keeping original design intent. Display both 3D models and the schedule in one environment to perform



*Slice design model components into smaller elements based on the requirements of construction planning.*

model-based scheduling. Add construction equipment and paths to schedule activities to visualize conflicts and resolve them before construction. Perform “what-if” analysis to reduce risks and delays by reviewing time-lapsed construction sequences. Identify areas that are ahead or behind schedule through a planned-versus-actual visualization.

### CONNECT OFFICE AND FIELD SEAMLESSLY

Extend the value of the 4D model into field workflows for status checks, work planning, review, and inspections within the SYNCHRO portfolio. With connected applications and workflows, a project team can review, validate, and communicate in one complete digital and interactive visual environment that includes documents, forms, and models.

Integration with Bentley Infrastructure Cloud™ enables seamless design and construction collaboration with project management capabilities, keeping everyone on the same page with up-to-date information for better decisions.

### ENABLE DIGITAL TWINS

SYNCHRO 4D, powered by Bentley's iTwin® technology, enables 4D construction models and reality data models to be accessible by stakeholders as a single source of truth. It empowers users to navigate and author construction models from gathered design models. The application also features best-in-class interoperability with a variety of third-party modeling



*Augment projects with data-rich 4D digital information throughout construction planning.*

## SYSTEM REQUIREMENTS

**MINIMUM:** Windows 10 64-bit, Windows 11 64-bit, or Windows Server 16, 2.8 GHz Octa Core

**RECOMMENDED:** 4 GHz Octa Core or 5 GHz Octa Core enterprise specification

# SYNCHRO 4D At-a-glance

## KEY FEATURES

- Take control of time by adding project schedules to your models.
- Leverage model-based QTO and create visual representations of your estimates
- Optimize construction tasks by reviewing with stakeholders in an immersive environment
- Plan and collaborate virtually to anticipate what-if scenarios and avoid mistakes in the field
- Tackle the spatial challenges of linear projects and share real-time progress updates on the fly

## DELIVER PROJECTS ON TIME

- Partnering with Microsoft means that you are working with trusted best-in-class cloud technology
- Plan, construct and manage your construction projects in 4D, providing the entire project team with real-time progress updates

## ELIMINATE REWORK AND PROTECT YOUR BUDGET

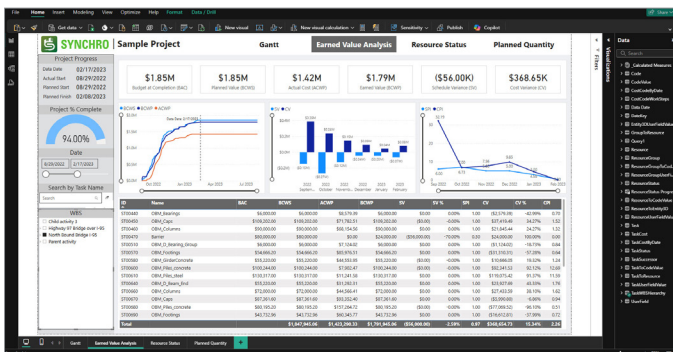
- Identify schedule problems in advance, saving you and your team both time and money
- Your data will be secure, up-to-date, and accessible from a range of devices based on roles and permissions

## FOCUS ON SAFETY

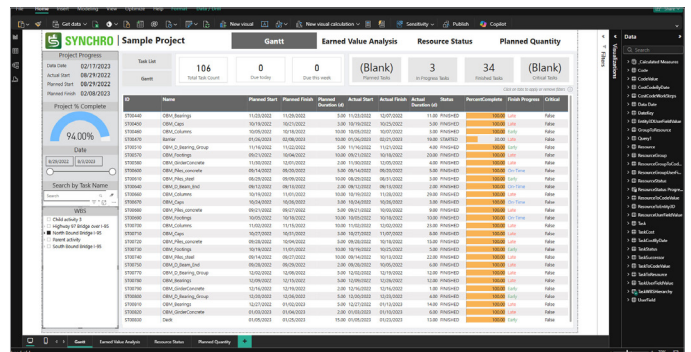
- Understand what you are building before you build it, to avoid all the potential risks involved
- Ensure that the entire team is engaged by inviting the supply chain to participate

## ENSURE QUALITY

- Everyone performs at a higher level when they can review, communicate, and cooperate in a digital and interactive visual environment
- Validate and optimize your project plan before you start on site



SYNCHRO 4D Power BI Connector Project EVA Tab



SYNCHRO 4D Power BI Connector Project Gantt Tab



**FIND OUT MORE AT BENTLEY.COM**

1.800.BENTLEY (1.800.236.8539) | Outside the US +1.610.458.5000 | **GLOBAL OFFICE LISTINGS** [bentley.com/contact](https://www.bentley.com/contact)